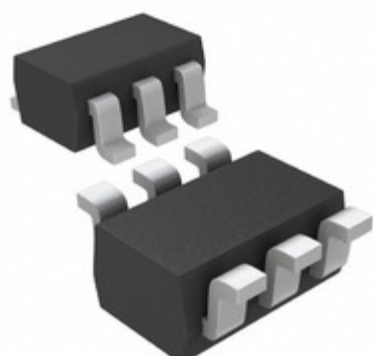


MAX4730EXT+T



Part Number: [MAX4730EXT+T](#)

Manufacturer: [Maxim Integrated](#)

Description: IC SWITCH SPDT SC70-6

Data sheet: [MAX4729,30](#)

[Part Numbering System](#)

RoHS Status: Lead free / RoHS Compliant

Ship From: Hong Kong

Shipment Way: DHL/Fedex/TNT/UPS/EMS

Images are for reference only.

See Product Specifications for product details.

Buy MAX4730EXT+T with confidence from Component-World.HK, 1 Year Warranty

[Request For Quotation](#)

PRODUCT PARAMETER

Part Number	MAX4730EXT+T	Manufacturer	Maxim Integrated
Description	IC SWITCH SPDT SC70-6	Lead Free Status / RoHS Status	Lead free / RoHS Compliant
Quantity Available	69301 pcs	Data sheet	MAX4729,30 Part Numbering System
Category	Integrated Circuits (ICs)	Voltage - Supply, Single (V+)	1.8 V ~ 5.5 V
Voltage - Supply, Dual (V±)	-	Switch Time (Ton, Toff) (Max)	45ns, 26ns
Switch Circuit	SPDT	Supplier Device Package	SC-70-6
Series	-	Packaging	Tape & Reel (TR)
Package / Case	6-TSSOP, SC-88, SOT-363	Other Names	MAX4730EXT+T-ND MAX4730EXT+TTR MAX4730EXTT
Operating Temperature	-40°C ~ 85°C (TA)	On-State Resistance (Max)	5.5 Ohm
Number of Circuits	1	Multiplexer/Demultiplexer Circuit	2:1
Moisture Sensitivity Level (MSL)	1 (Unlimited)	Manufacturer Standard Lead Time	6 Weeks
Lead Free Status / RoHS Status	Lead free / RoHS Compliant	Detailed Description	1 Circuit IC Switch 2:1 5.5 Ohm SC-70-6
Current - Leakage (IS(off)) (Max)	2nA	Crosstalk	-67dB @ 1MHz
Charge Injection	3pC	Channel-to-Channel Matching (ΔRon)	50 mOhm
Channel Capacitance (CS(off), CD(off))	6.5pF	Base Part Number	MAX4730
-3db Bandwidth	300MHz		

Component-World.com is a Reliable Stocking Distributor of Electronic Components. We specialize in all Maxim Integrated series electronic components. We have 69301 pieces of Maxim Integrated MAX4730EXT+T in stock available now. Request a quote from electronics components distributor at Component-World.com, our sales team will contact you within 24 hours.

RFQ Email: info@Components-World.com

RELATED PRODUCTS

	Part#: MAX4731EBL+T Description: IC SWITCH DUAL SPST 9UCSP	Manufacturers: Maxim Integrated	RFQ
	Part#: MAX4731EUA+ Description: IC SWITCH DUAL SPST 8UMAX	Manufacturers: Maxim Integrated	RFQ
	Part#: MAX4731EUA+T Description: IC SWITCH DUAL SPST 8UMAX	Manufacturers: Maxim Integrated	RFQ
	Part#: MAX4731ETA+T Description: IC SWITCH DUAL SPST 8TDFN	Manufacturers: Maxim Integrated	RFQ
	Part#: MAX472EPA Description: IC OPAMP CURRENT SENSE 8DIP	Manufacturers: Maxim Integrated	RFQ
	Part#: MAX472CPA Description: IC OPAMP CURRENT SENSE 8DIP	Manufacturers: Maxim Integrated	RFQ
	Part#: MAX472ESA+ Description: IC OPAMP CURRENT SENSE 8SOIC	Manufacturers: Maxim Integrated	RFQ
	Part#: MAX472CSA+ Description: IC OPAMP CURRENT SENSE 8SOIC	Manufacturers: Maxim Integrated	RFQ
	Part#: MAX4733ETA+ Description: IC SWITCH DUAL SPST 8TDFN	Manufacturers: Maxim Integrated	RFQ
	Part#: MAX4730ELT+T Description: IC SWITCH SPDT 6UDFN	Manufacturers: Maxim Integrated	RFQ
	Part#: MAX4731EBL+ Description: IC ANALOG SWITCH	Manufacturers: Maxim Integrated	RFQ
	Part#: MAX4733ETA+T Description: IC SWITCH DUAL SPST 8TDFN	Manufacturers: Maxim Integrated	RFQ
	Part#: MAX4732EUA+T Description: IC SWITCH DUAL SPST 8UMAX	Manufacturers: Maxim Integrated	RFQ
	Part#: MAX4731ETA+ Description: IC SWITCH DUAL SPST 8TDFN	Manufacturers: Maxim Integrated	RFQ
	Part#: MAX472ESA Description: IC OPAMP CURRENT SENSE 8SOIC	Manufacturers: Maxim Integrated	RFQ
	Part#: MAX4732EUA+ Description: IC SWITCH DUAL SPST 8UMAX	Manufacturers: Maxim Integrated	RFQ
	Part#: MAX4729ELT+T Description: IC SWITCH SPDT 6UDFN	Manufacturers: Maxim Integrated	RFQ
	Part#: MAX4729EXT+T Description: IC SWITCH SPDT SC70-6	Manufacturers: Maxim Integrated	RFQ
	Part#: MAX472CSA Description: IC OPAMP CURRENT SENSE 8SOIC	Manufacturers: Maxim Integrated	RFQ
	Part#: MAX4723EUA+T Description: IC SWITCH DUAL SPST 8UMAX	Manufacturers: Maxim Integrated	RFQ

Related keywords for MAX4730EXT+T

Maxim Integrated MAX4730EXT+T	MAX4730EXT+T distributor	MAX4730EXT+T supplier	MAX4730EXT+T price
MAX4730EXT+T download datasheet	MAX4730EXT+T datasheet	MAX4730EXT+T stock	buy MAX4730EXT+T
Maxim Integrated MAX4730EXT+T			